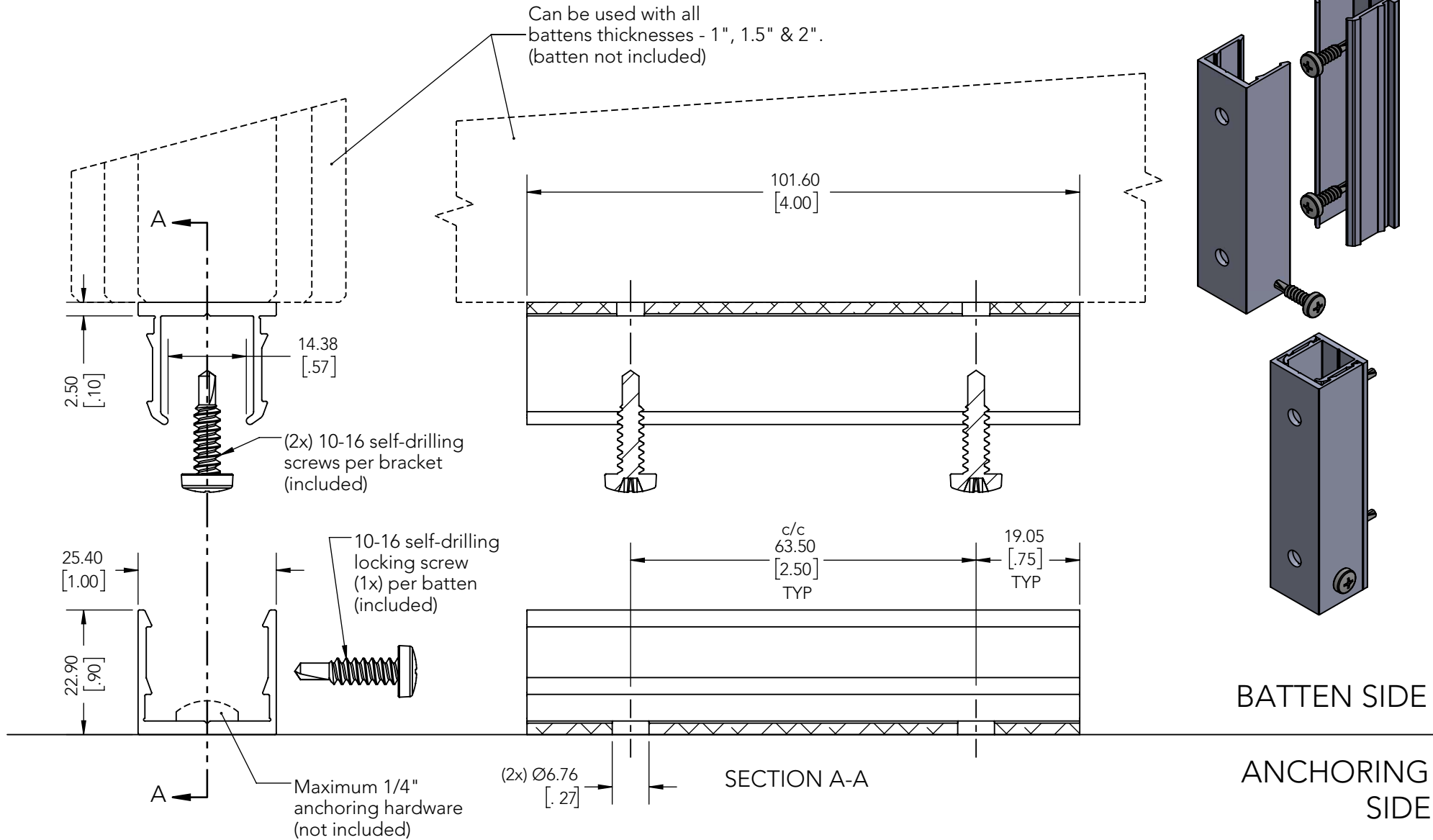


TECHNICAL DATA SHEET / INSTALLATION
SN BRACKET - 1, 1½ and 2" BATTEN
ALUMINUM BATTENS ACCESSORIES

INSTALLATION : VERTICAL or CEILING ONLY



Units : mm [in]



1-888-88DIZAL | DIZAL.COM

Maibec reserves the right to modify the elements on this technical data sheet without prior notice.

Maibec Dizal™
Aluminum cladding

Model:
**SN Bracket -
1, 1½, 2in Batten**

Drawing by: MS
Date : 16/10/23
Rev date:

Alloy: 6063-T5 aluminum
Weight (kit): 0.12lb / 0.057kg
Finish: RAL 7022 Matte
Scale: 1 : 1

Recommended Span distance mounting for anchor screws (by others) and/or Maibec Dizal Brackets is 8'-0" [2438mm] c/c*.
*Calculated for 1" [25mm], 1.5" [38mm] and 2" [50mm] battens thickness from 2" [50mm] to 8" [203mm] width. For other dimensions, please contact customer services.

NOTE: The first screw/bracket must be installed a maximum of 12" [305mm] from each batten end.
IMPORTANT: Always check local building regulations before installing Maibec Dizal battens.

THIS DRAWING IS THE PROPERTY OF MAIBEC INC. ALL REPRODUCTIONS, IN FULL OR IN PART, MUST BE AUTHORIZED BY THE ABOVE MENTIONED. MAIBEC RESERVES THE RIGHT TO MODIFY THE ELEMENTS ON THIS TECHNICAL DATA SHEET WITHOUT PRIOR NOTICE.