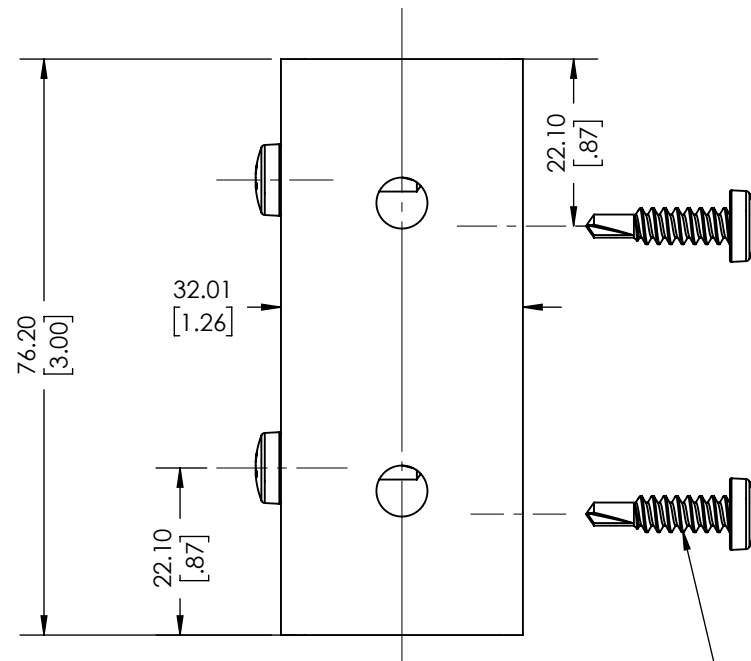
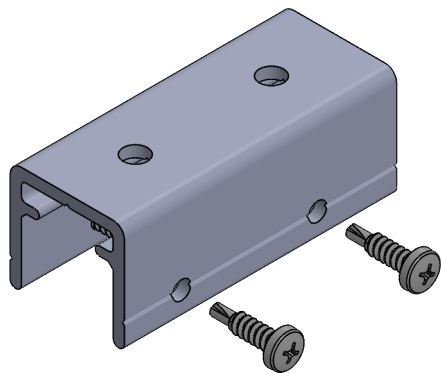


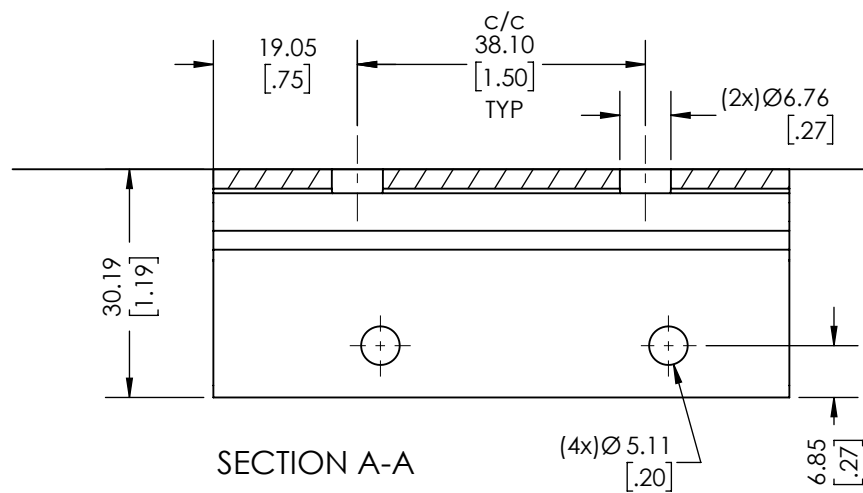
TECHNICAL DATA SHEET / INSTALLATION

CC BRACKET - 1in BATTEN

ALUMINUM BATTENS ACCESSORIES



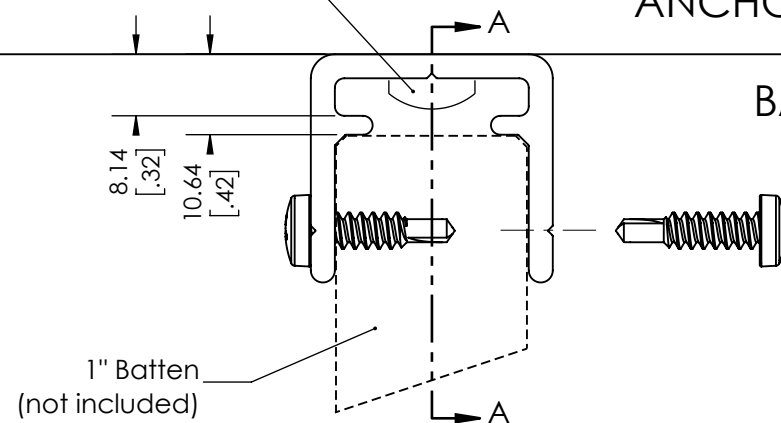
(4x) Painted 10-16 x 0.75"
self-drilling screws
per bracket (included)



Anchoring hardware
(not included)

ANCHORING SIDE

BATTEN SIDE



Units : mm [po]



1-888-88DIZAL | DIZAL.COM

Maibec reserves the right to modify the elements on this technical data sheet without prior notice.

Maibec Dizal™
Aluminum cladding

Model:
**CC Bracket -
1in Batten**

Drawing by: MS
Date: 12/10/23
Rev date:

Alloy:	6063-T6 aluminum
Weight:	0.11lb / 0.049kg
Finish:	RAL 7022 Matte
Scale:	1 : 1

Recommended Span distance mounting for anchor screws (by others) and/or Maibec Dizal Brackets is 8'-0" [2438mm] c/c*.
*Calculated for 1" [25mm], 1.5" [38mm] and 2" [50mm] battens thickness from 2" [50mm] to 8" [203mm] width. For other dimensions, please contact customer services.

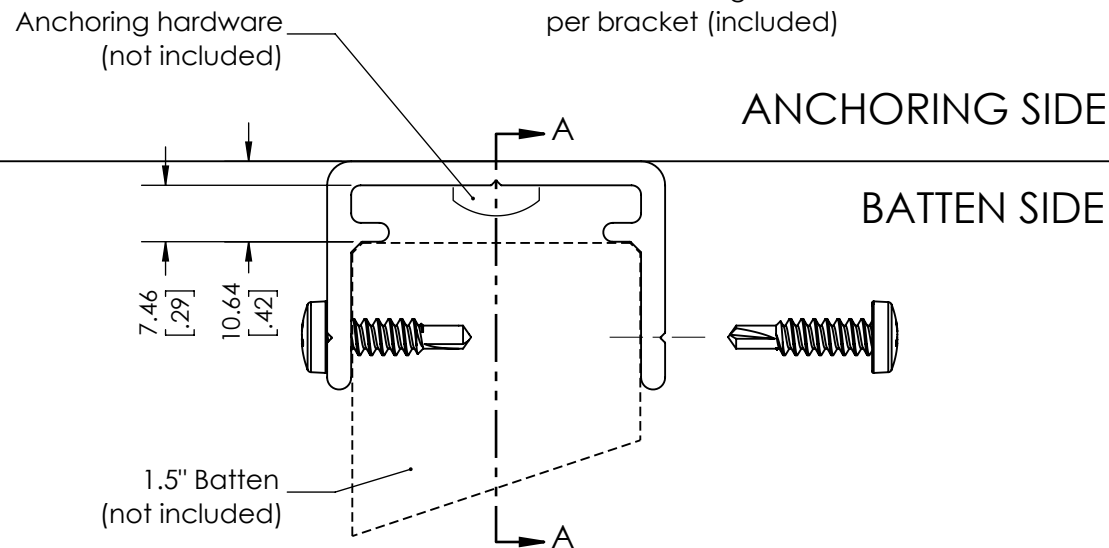
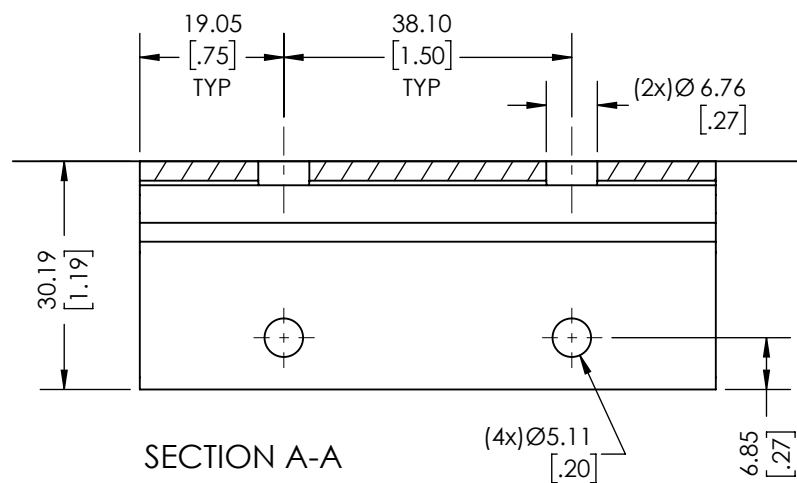
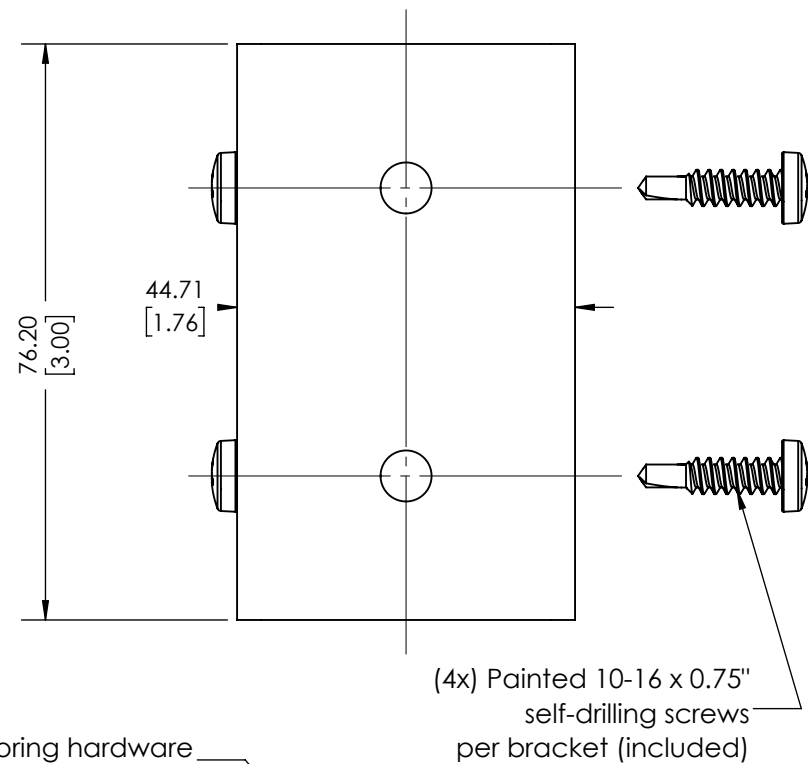
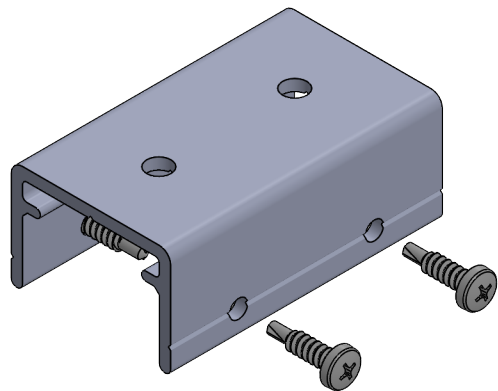
NOTE: The first screw/bracket must be installed a maximum of 12" [305mm] from each batten end.
IMPORTANT: Always check local building regulations before installing Maibec Dizal battens.

THIS DRAWING IS THE PROPERTY OF MAIBEC INC. ALL REPRODUCTIONS, IN FULL OR IN PART, MUST BE AUTHORIZED BY THE ABOVE MENTIONED. MAIBEC RESERVES THE RIGHT TO MODIFY THE ELEMENTS ON THIS TECHNICAL DATA SHEET WITHOUT PRIOR NOTICE.

TECHNICAL DATA SHEET / INSTALLATION

CC BRACKET - 1.5" BATTEN

ALUMINUM BATTENS ACCESSORIES



Units : mm [in]



1-888-88DIZAL | DIZAL.COM

Maibec reserves the right to modify the elements on this technical data sheet without prior notice.

Maibec Dizal[™]

Aluminum cladding

Model:
**CC Bracket -
1.5in Batten**

Drawing by: MS
Date: 12/10/23
Rev date:

Alloy: 6063-T6 aluminum

Weight: 0.12lb / 0.055kg

Finish: RAL 7022 Matte

Scale: 1 : 1

Recommended Span distance mounting for anchor screws (by others) and/or Maibec Dizal Brackets is 8'-0" [2438mm] c/c*.

*Calculated for 1" [25mm], 1.5" [38mm] and 2" [50mm] battens thickness from 2" [50mm] to 8" [203mm] width. For other dimensions, please contact customer services.

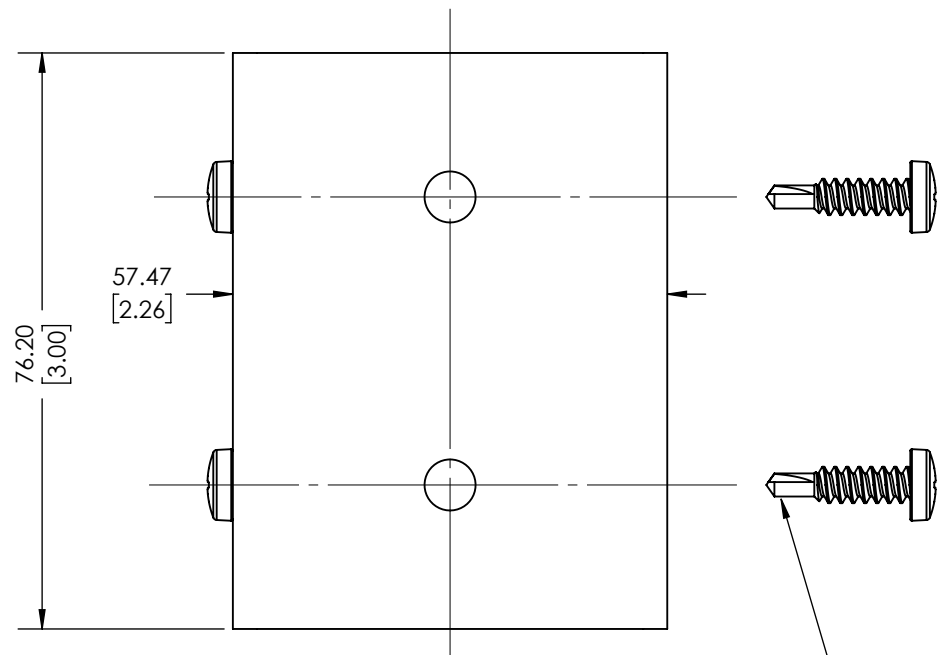
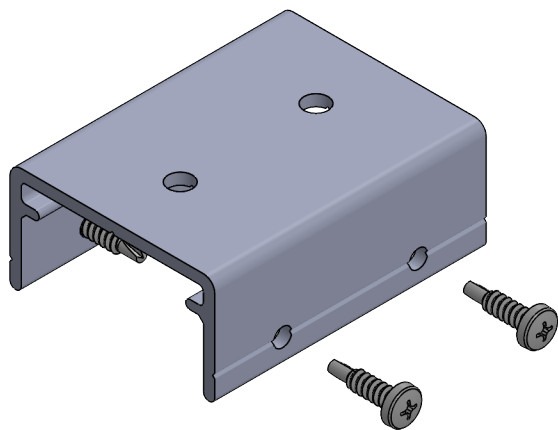
NOTE: The first screw/bracket must be installed a maximum of 12" [305mm] from each batten end.
IMPORTANT: Always check local building regulations before installing Maibec Dizal battens.

THIS DRAWING IS THE PROPERTY OF MAIBEC INC. ALL REPRODUCTIONS, IN FULL OR IN PART, MUST BE AUTHORIZED BY THE ABOVE MENTIONED. MAIBEC RESERVES THE RIGHT TO MODIFY THE ELEMENTS ON THIS TECHNICAL DATA SHEET WITHOUT PRIOR NOTICE.

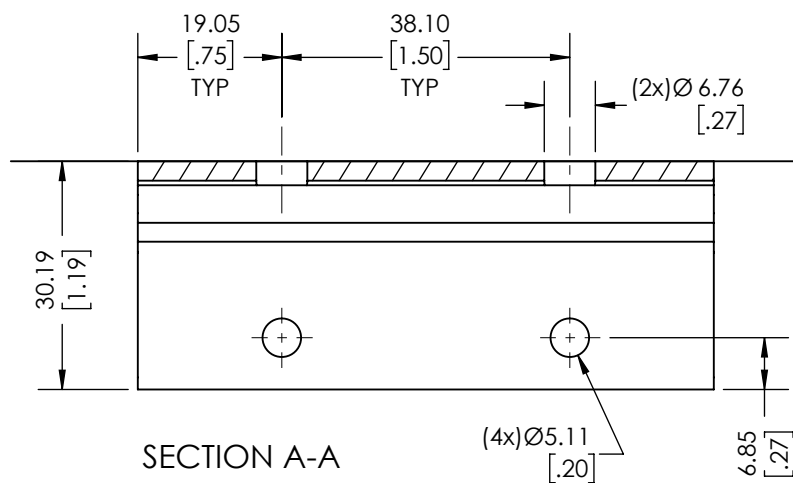
TECHNICAL DATA SHEET / INSTALLATION

CC BRACKET - 2" BATTEN

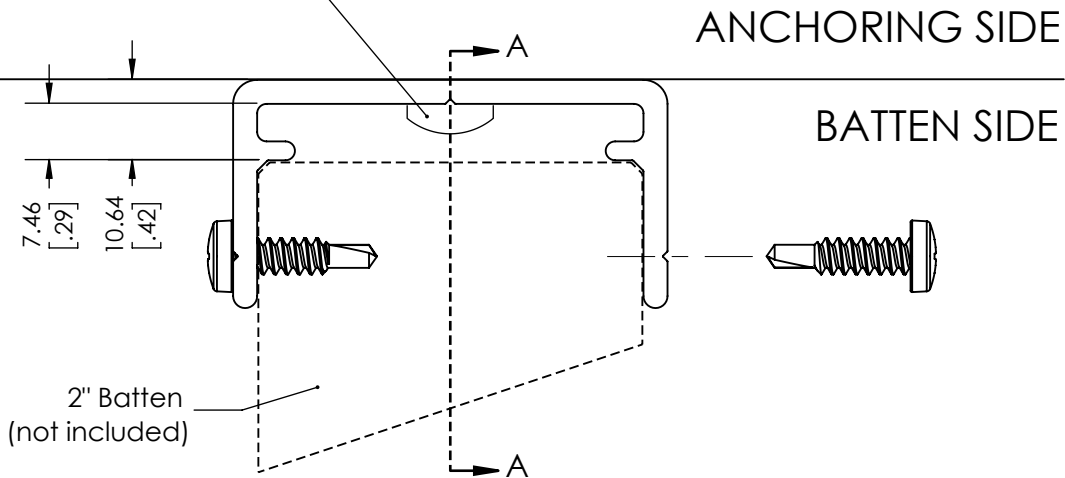
ALUMINUM BATTENS ACCESSORIES



(4x) Painted 10-16 x 0.75"
self-drilling screws
per bracket (included)



Anchoring hardware
(not included)



ANCHORING SIDE

BATTEN SIDE

Units : mm [in]



1-888-88DIZAL | DIZAL.COM

Maibec reserves the right to modify the elements on this technical data sheet without prior notice.

Maibec Dizal™
Aluminum cladding

Model:
**CC Bracket -
2in Batten**

Drawing by: MS
Date: 12/10/23
Rev date:

Alloy: 6063-T6 aluminum
Weight: 0.17lb / 0.077kg
Finish: RAL 7022 Matte
Scale: 1 : 1

Recommended Span distance mounting for anchor screws (by others) and/or Maibec Dizal Brackets is 8'-0" [2438mm] c/c*.
*Calculated for 1" [25mm], 1.5" [38mm] and 2" [50mm] battens thickness from 2" [50mm] to 8" [203mm] width. For other dimensions, please contact customer services.

NOTE: The first screw/bracket must be installed a maximum of 12" [305mm] from each batten end.
IMPORTANT: Always check local building regulations before installing Maibec Dizal battens.

THIS DRAWING IS THE PROPERTY OF MAIBEC INC. ALL REPRODUCTIONS, IN FULL OR IN PART, MUST BE AUTHORIZED BY THE ABOVE MENTIONED. MAIBEC RESERVES THE RIGHT TO MODIFY THE ELEMENTS ON THIS TECHNICAL DATA SHEET WITHOUT PRIOR NOTICE.