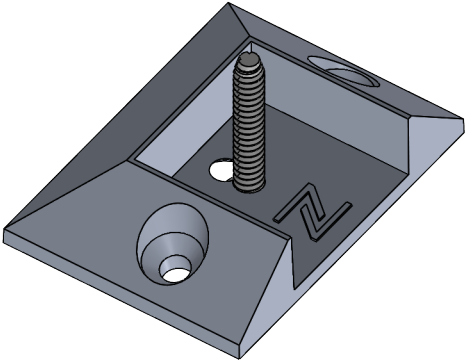
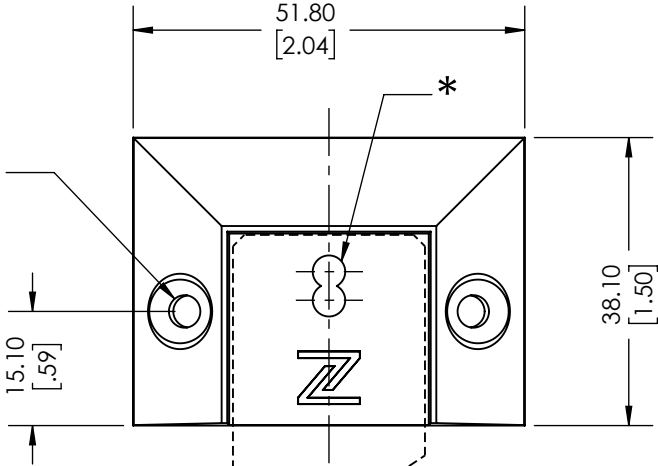


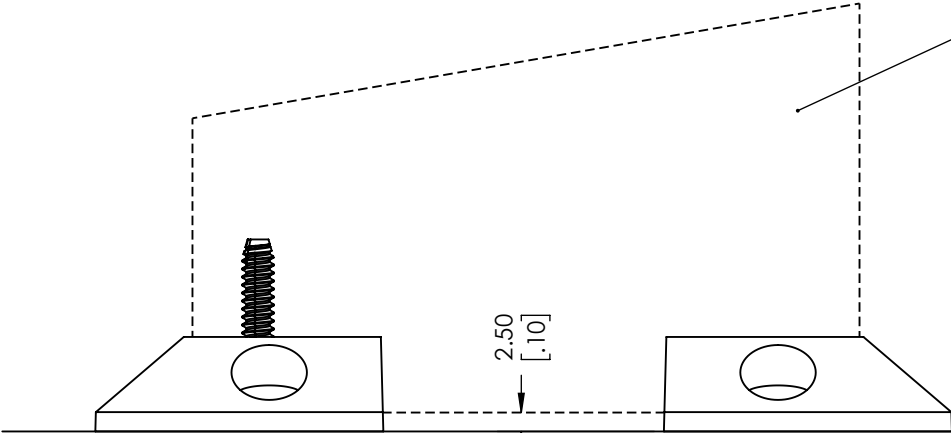
TECHNICAL DATA SHEET / INSTALLATION
BC BRACKET - 1" BATTEN
ALUMINUM BATTENS ACCESSORIES



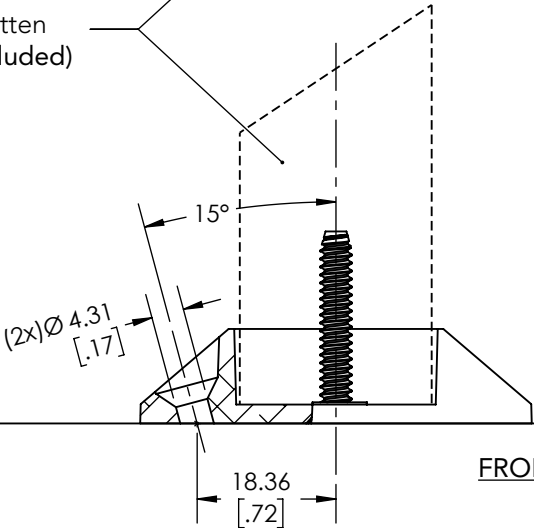
#8 Anchoring hardware (not included)



1" Batten (not included)



SIDE VIEW



BATTEN SIDE

FRONT VIEW

(1x) 8-32 x 1" self-taping screw per bracket (included)  
Fasten directly in the batten extrusion, before final installation



ANCHORING SIDE

Units : mm [in]



1-888-88DIZAL | DIZAL.COM

Maibec reserves the right to modify the elements on this technical data sheet without prior notice.

Maibec Dizal™  
Aluminum cladding

Model:	BC Bracket - 1in Batten
Alloy:	A380 aluminum
Weight (Kit):	0.10lb / 0.046kg
Finish:	RAL 7022 Matte
Scale:	1 : 1
Drawing by:	MS
Date:	12/10/23
Rev date:	

\* Make sure to use proper hole when fastening BC brackets to the batten. There should be no space between the two parts.

NOTE:  
1) Make sure to remove end cap (if applicable) prior to install brackets to each batten end.  
2) Fasten the bracket to the batten before installing on wall/ground/ceiling.

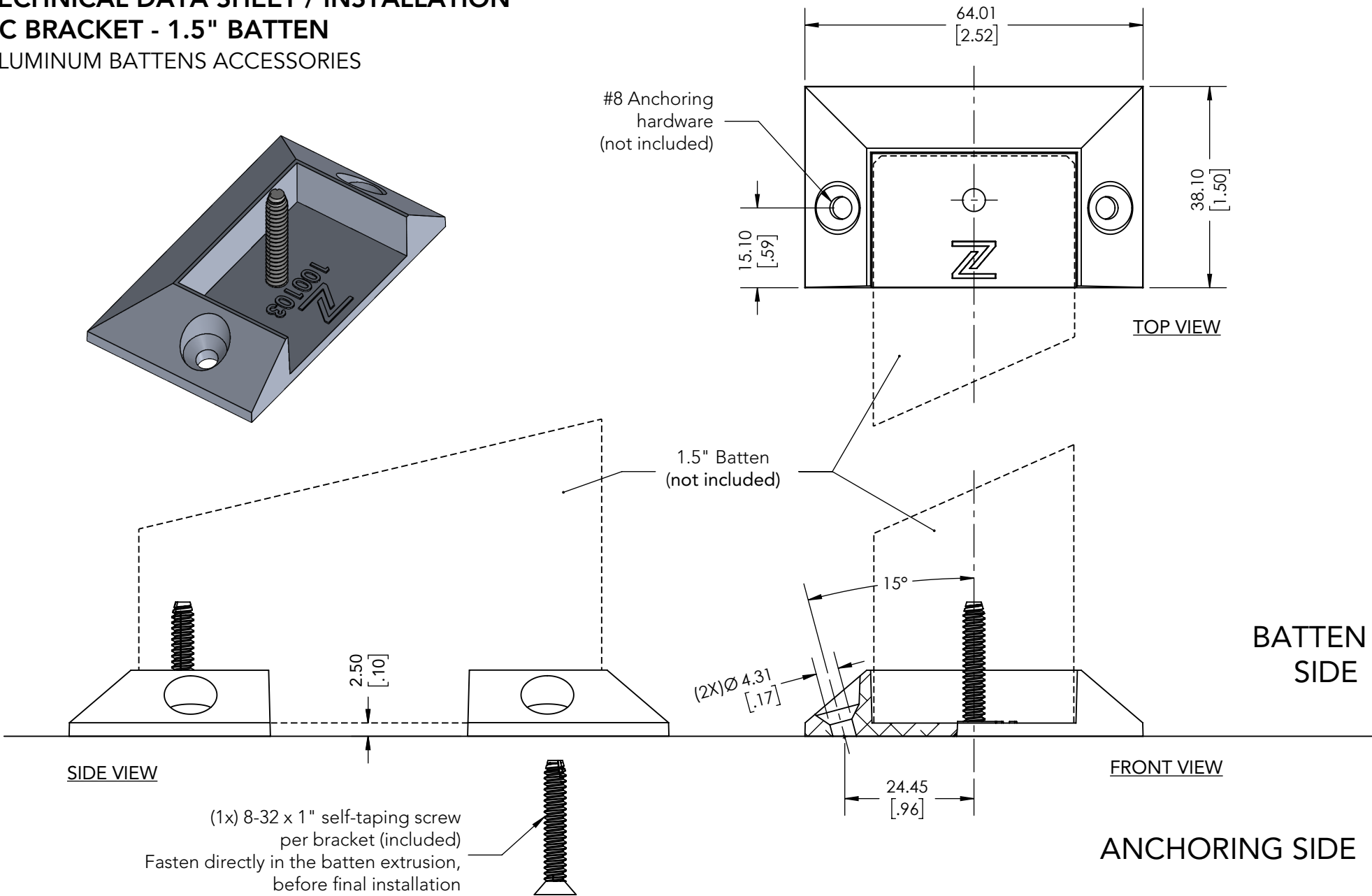
IMPORTANT: Always check local building regulations before installing Maibec Dizal battens.

THIS DRAWING IS THE PROPERTY OF MAIBEC INC. ALL REPRODUCTIONS, IN FULL OR IN PART, MUST BE AUTHORIZED BY THE ABOVE MENTIONED. MAIBEC RESERVES THE RIGHT TO MODIFY THE ELEMENTS ON THIS TECHNICAL DATA SHEET WITHOUT PRIOR NOTICE.

TECHNICAL DATA SHEET / INSTALLATION

BC BRACKET - 1.5" BATTEN

ALUMINUM BATTENS ACCESSORIES



Units : mm [in]



1-888-88DIZAL | DIZAL.COM

Maibec reserves the right to modify the elements on this technical data sheet without prior notice.

**Maibec Dizal™**  
Aluminum cladding

Model:	A380 aluminum
BC Bracket - 1.5in Batten	Weight (Kit): 0.12lb / 0.056kg
Drawing by: MS	Finish: RAL 7022 Matte
Date: 12/10/23	Scale: 1 : 1
Rev date:	

NOTE:

1) Make sure to remove end cap (if applicable) prior to install brackets to each batten end.

2) Fasten the bracket to the batten before installing on wall/ground/ceiling.

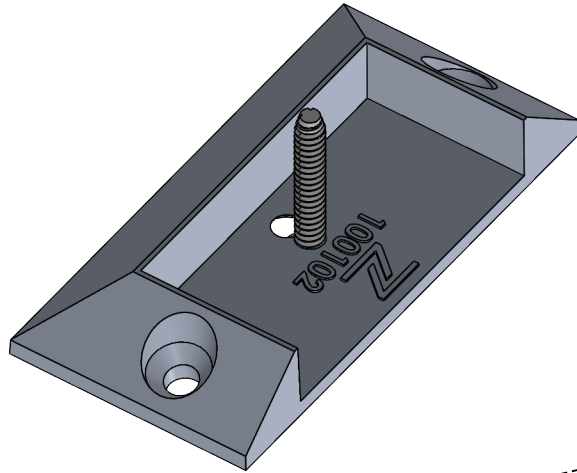
IMPORTANT: Always check local building regulations before installing Maibec Dizal battens.

THIS DRAWING IS THE PROPERTY OF MAIBEC INC. ALL REPRODUCTIONS, IN FULL OR IN PART, MUST BE AUTHORIZED BY THE ABOVE MENTIONED. MAIBEC RESERVES THE RIGHT TO MODIFY THE ELEMENTS ON THIS TECHNICAL DATA SHEET WITHOUT PRIOR NOTICE.

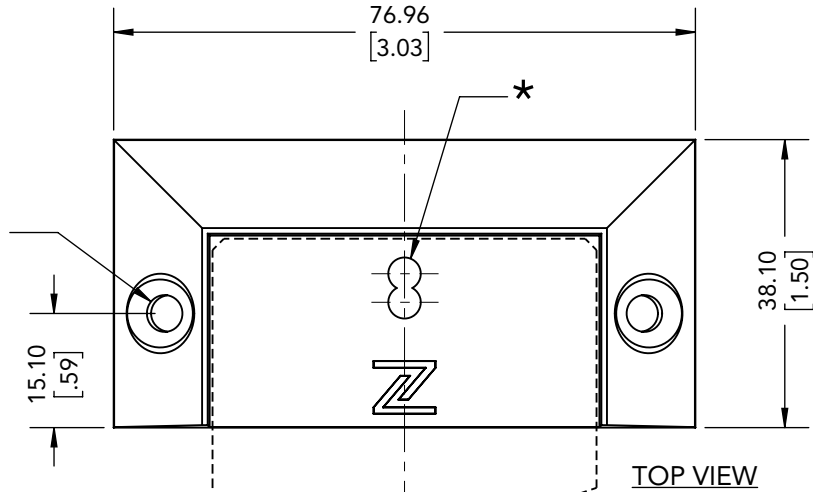
# TECHNICAL DATA SHEET / INSTALLATION

## BC BRACKET - 2" BATTEN

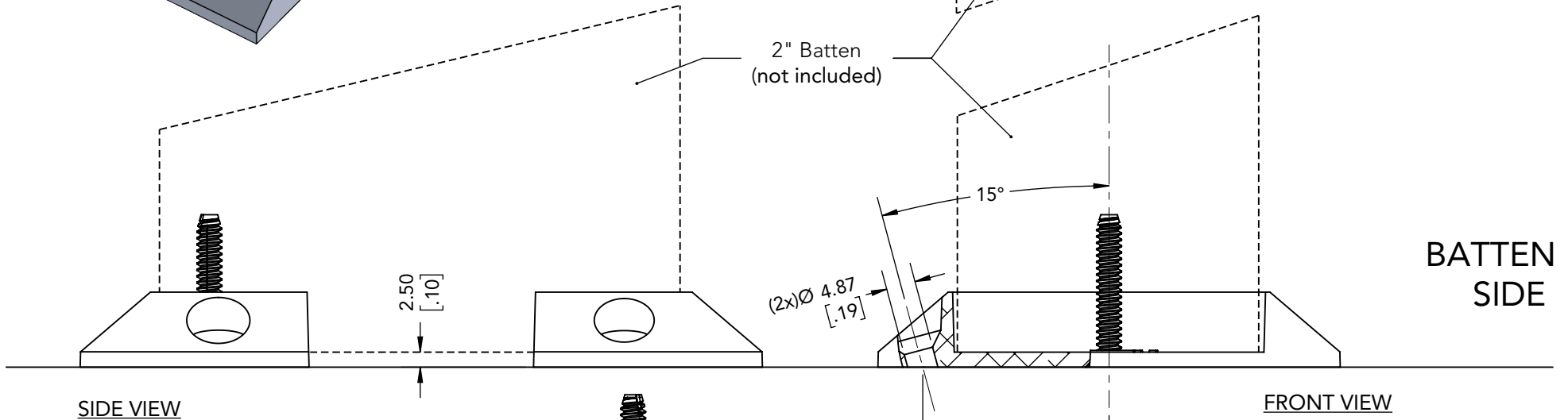
### ALUMINUM BATTENS ACCESSORIES



#8 Anchoring hardware (not included)



2" Batten (not included)



BATTEN SIDE

ANCHORING SIDE

(1x) 8-32 x 1" self-taping screw per bracket (included)  
Fasten directly in the batten extrusion, before final installation

Units : mm [in]



1-888-88DIZAL | DIZAL.COM

Maibec reserves the right to modify the elements on this technical data sheet without prior notice.

**Maibec Dizal**  
Aluminum cladding

Model:  
**BC Bracket - 2in Batten**

Drawing by: MS  
Date: 12/10/23  
Rev date:

Alloy: A380 aluminum

Weight (Kit): 0.14lb / 0.066kg

Finish: RAL 7022 Matte

Scale: 1 : 1

\* Make sure to use proper hole when fastening BC brackets to the batten. There should be no space between the two parts.

NOTE:

1) Make sure to remove end cap (if applicable) prior to install brackets to each batten end.  
2) Fasten the bracket to the batten before installing on wall/ground/ceiling.

IMPORTANT: Always check local building regulations before installing Maibec Dizal battens.

THIS DRAWING IS THE PROPERTY OF MAIBEC INC. ALL REPRODUCTIONS, IN FULL OR IN PART, MUST BE AUTHORIZED BY THE ABOVE MENTIONED. MAIBEC RESERVES THE RIGHT TO MODIFY THE ELEMENTS ON THIS TECHNICAL DATA SHEET WITHOUT PRIOR NOTICE.