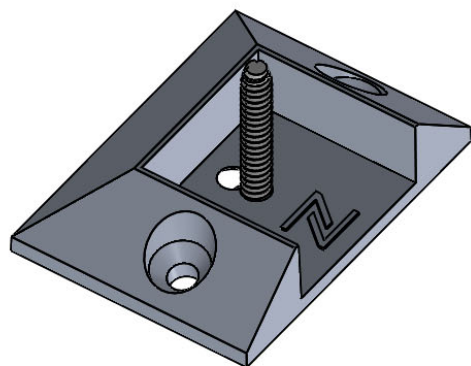


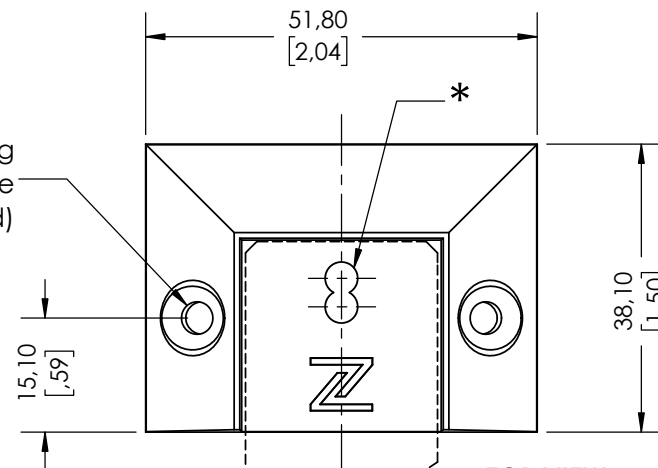
NOTE:

- Make sure to remove end cap (if applicable) prior to install brackets to each batten end.
 - Fasten the bracket to the batten before installing on wall/ground/ceiling.
- IMPORTANT:** Always check local building regulations before installing DIZAL battens.

BC BRACKET 1" BATTENS

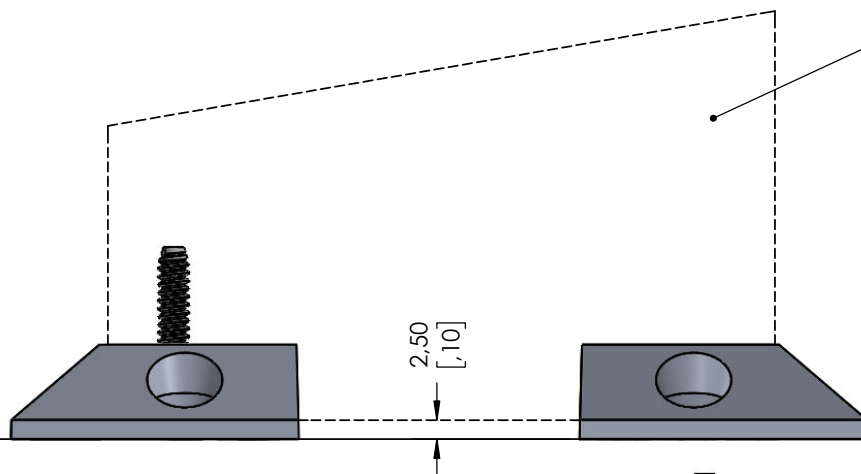


#8 Anchoring hardware (not included)

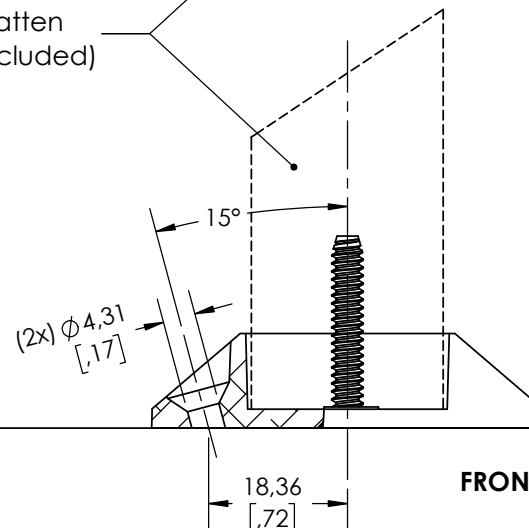


TOP VIEW

1" Batten (not included)



SIDE VIEW



BATTEN SIDE

FRONT VIEW

(1x) 8-32 x 1" self-taping screw per bracket (included)
Fasten directly in the batten extrusion, before installation



ANCHORING SIDE

* Make sure to use proper hole when fastening BC brackets to the batten. There shouldn't have any gap between the two parts.

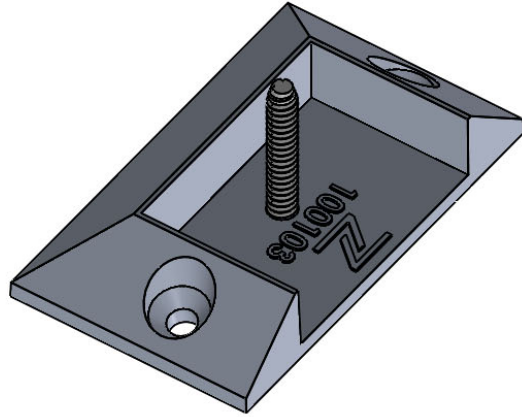
THIS DRAWING IS THE PROPERTY OF DIZAL INC. ALL REPRODUCTIONS, IN FULL OR IN PART, MUST BE AUTHORIZED BY THE ABOVE MENTIONED. DIZAL RESERVES THE RIGHT TO MODIFY THE ELEMENTS ON THIS TECHNICAL DATA SHEET WITHOUT PRIOR NOTICE.

Pce/Part #	"BC" TYPE BRACKET - 1" BATTENS		
Description	Battens Bracket installation details		
Par/By	M.Savary	Date	22-11-14
Fin/Finish	RAL 7022 SMOOTH MATTE		
Unités/Units	mm [in]	Éch./Scale	1:1

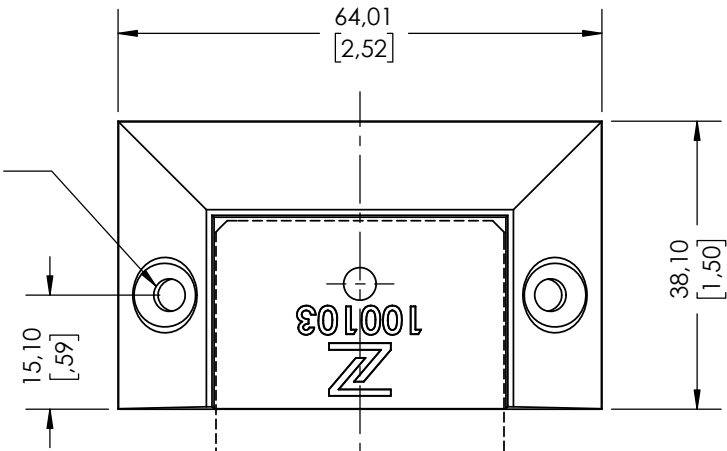
NOTE:

- Make sure to remove end cap (if applicable) prior to install brackets to each batten end.
 - Fasten the bracket to the batten before installing on wall/ground/ceiling.
- IMPORTANT:** Always check local building regulations before installing DIZAL battens.

BC BRACKET 1.5" BATTENS



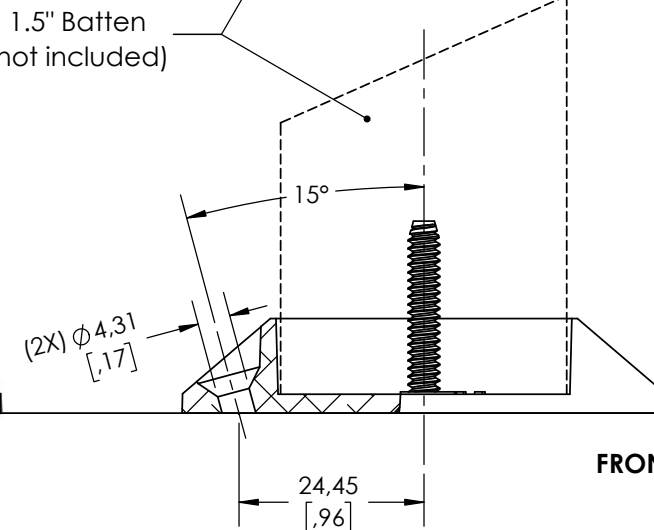
#8 Anchoring hardware
(not included)



TOP VIEW

1.5" Batten
(not included)

BATTEN SIDE



FRONT VIEW

SIDE VIEW

(1x) 8-32 x 1" self-taping screw
per bracket (included)
*Fasten directly in the batten extrusion,
before installation*



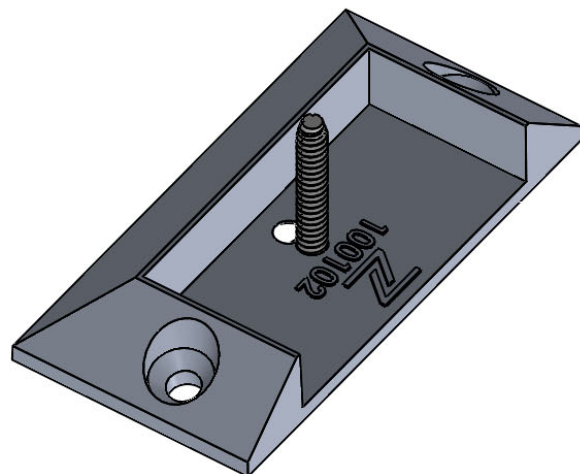
ANCHORING SIDE

Pce/Part #	"BC" TYPE BRACKET - 1.5" BATTENS		
Description	Battens Bracket installation details		
Par/By	M.Savary	Date	22-11-14
Fin/Finish	RAL 7022 SMOOTH MATTE		
Unités/Units	mm [in]	Éch./Scale	1:1

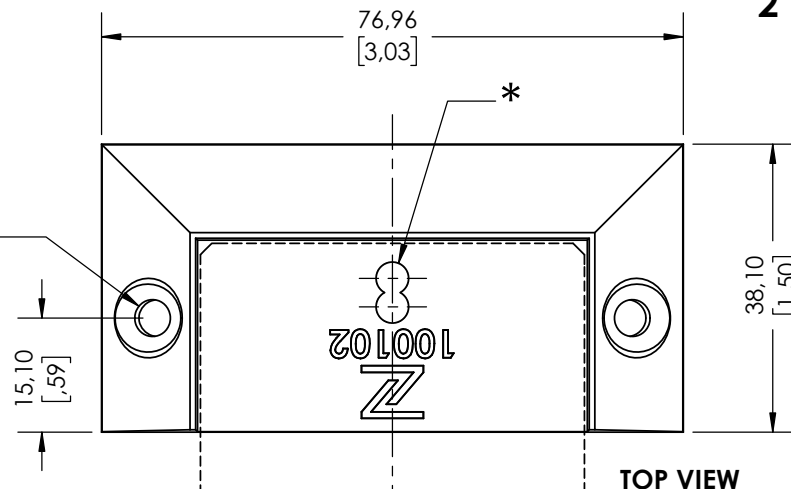
NOTE:

- Make sure to remove end cap (if applicable) prior to install brackets to each batten end.
 - Fasten the bracket to the batten before installing on wall/ground/ceiling.
- IMPORTANT:** Always check local building regulations before installing DIZAL battens.

BC BRACKET 2" BATTENS

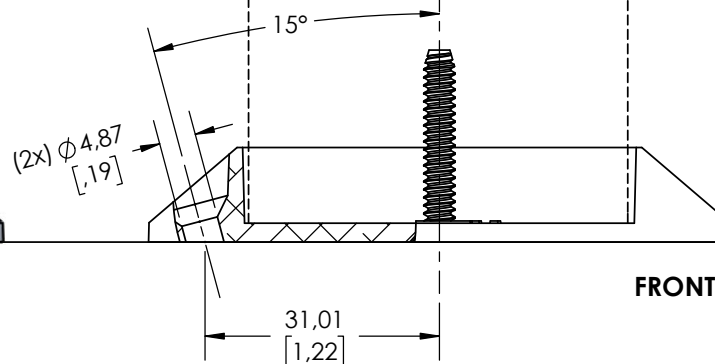


#8 Anchoring hardware
(not included)

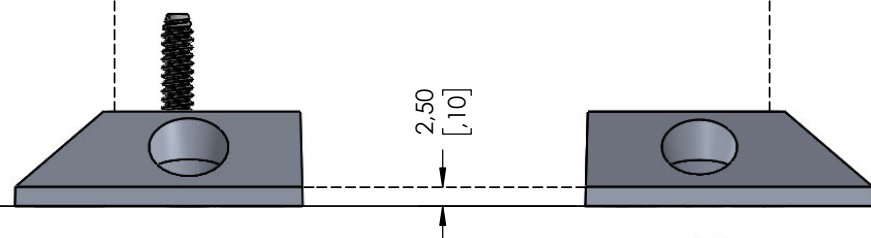


2" Batten
(not included)

**BATTEN
SIDE**



SIDE VIEW



(1x) 8-32 x 1" self-taping screw
per bracket (included)
Fasten directly in the batten extrusion,
before installation



ANCHORING SIDE

Pce/Part #	"BC" TYPE BRACKET - 2" BATTENS		
Description	Battens Bracket installation details		
Par/By	M.Savary	Date	22-11-14
Fin/Finish	RAL 7022 SMOOTH MATTE		
Unités/Units	mm [in]	Éch./Scale	1:1

* Make sure to use proper hole when fastening BC brackets to the batten. There shouldn't have any gap between the two parts.