

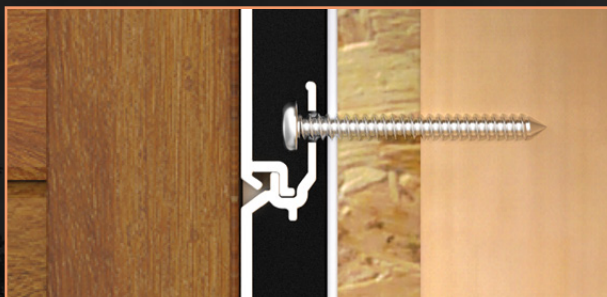
A close-up, high-contrast photograph of an owl's eye. The eye is the central focus, with its pupil and iris clearly visible. The surrounding feathers are dark and textured. Overlaid on the pupil is the DIZAL logo, which consists of the word "DIZAL" in a bold, sans-serif font. The "D", "I", "A", and "L" are white, while the "Z" is a bright orange color. A small registered trademark symbol (®) is located to the upper right of the "L".

DIZAL[®]

INSTALLATION GUIDE
ALUMINUM SIDING



INSTALLATION STEPS



IMPORTANT NOTES

Use stainless steel screws #8 x 1-1/2" every 16".

Aluminum undergoes expansion and contraction due to temperature variation. Do not over tighten the screw, leave 1/16" of space between the fastener head and the plank and screw in the center of the slot.



Always use a piece of wood to "snap" the cap on the base of the accessories. You must never directly hammer the aluminum, as you may damage the trim or its finish.



When installing the siding on steel bars (Z-Bar), there must be a membrane on the Z-Bar so that the aluminum is not in contact with the steel.

A high quality waterproofing membrane must be installed on the wall to insure a complete waterproof installation.



When cutting siding and accessories, always use a compound miter saw or small table saw equipped with 80T - 100T non-ferrous metal cutting blade.

Use appropriate eye and ear protection when cutting metal siding.



1. WATERPROOFING MEMBRANE

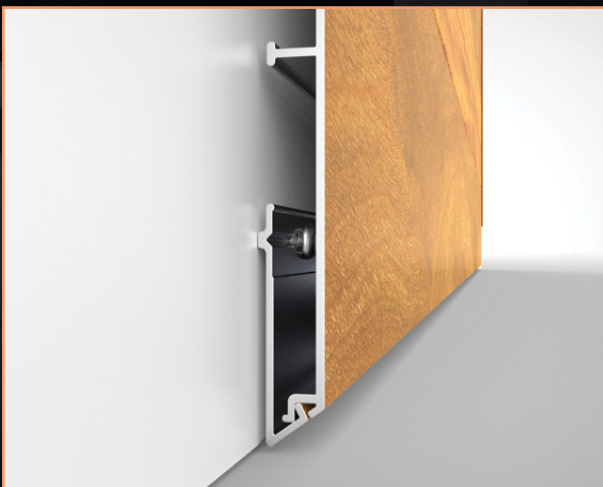
A properly installed high quality waterproofing membrane is essential for keeping the building dry.



2. TO START

Install the base of the J-Trim, base of the H-Trim and base of the outside corner first.

Screw through the base every 16".



3. STARTER STRIP

Install the starter strip as shown and keep 3/16" on both ends for expansion and contraction (see image above).

Make sure the starter strip is leveled.

INSTALLATION STEPS



4. PLANKS

The planks must be inserted all the way into the previously installed plank before screwing. Remove any debris present in the the lower plank if necessary.



5. J-TRIM

Keep 3/16" between the trim and the plank to allow expansion and contraction.

During installation of trim J-Trim Cap, the installer must cut 1/4" (6.3 mm) off each end of the piece and cover any raw aluminum finish with a color-matching touch-up pen. Refer to page 3 for appropriate blade to use with aluminum.



6. H-TRIM

Keep 3/16" between the trim and the plank to allow expansion and contraction.

During installation of trim H-Trim Cap, the installer must cut 1/4" (6.3 mm) off each end of the piece and cover any raw aluminum finish with a color-matching touch-up pen. Refer to page 3 for appropriate blade to use with aluminum.



7. OUTSIDE CORNER (OSC)

Keep 3/16" between the outside corner and the plank to allow expansion and contraction.

During installation of Outside Corner Cap, the installer must cut 1/4" (6.3 mm) off each end of the piece and cover any raw aluminum finish with a color-matching touch-up pen. Refer to page 3 for appropriate blade to use with aluminum.



8. INSIDE CORNER

To make an inside corner, finish the first wall with J-Trim 1 3/4" and start the adjacent wall with J-Trim 1".

Keep 3/16" between the trims and the planks to allow expansion and contraction.

During installation of trim J-Trim Cap, the installer must cut 1/4" (6.3 mm) off each end of the piece and cover any raw aluminum finish with a color-matching touch-up pen. Refer to page 3 for appropriate blade to use with aluminum.



8. INSIDE CORNER (ALTERNATE FINISH)

Inside corners can also be finished with planks running up to the adjacent wall and cut 3/16" short to allow for expansion and contraction.

Start the adjacent wall with J-Trim 1".

INSTALLATION STEPS



9. LAST ROW

On the last row use J-Trim 1" or J-Trim 1 3/4" as shown.

Install a small 3/8" thick spacer between J-Trim base and plank to avoid movement on the last row.

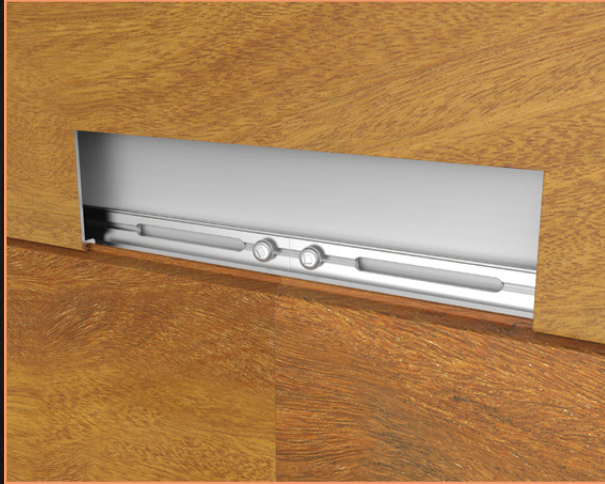
Keep 3/16" from the "snap wall" and on both ends of the plank for expansion and contraction.



10. WINDOW

For a window or a door, simply use J-Trim 1" or J-Trim 1 3/4" as shown.





11. ADJACENT PLANKS

It is possible to install two planks without using an H-Trim. In that case, start by cutting 1/4" (6.3 mm) off both planks to assure a clean 90 ° cut. Lock both ends at the junction by screwing tightly through the aluminum. Screw remaining of plank every 16" using the slots.

To achieve a perfect butt-joint, use the touch-up pen supplied by Dizal directly on the aluminum of each plank.

Installing more than two consecutive planks requires an H-Trim (Step 6), in order to allow for the expansion and contraction of the aluminum.



12. SOFFIT

The plank can be used as a soffit. The junction from the wall to the soffit is done as an inside corner. (Step 8.)

VERTICAL INSTALLATION



VERTICAL INSTALLATION STEPS



1. WATERPROOFING MEMBRANE

A properly installed high quality waterproofing membrane is essential for keeping the building dry.



2. STARTER - BASE SECTION

The first plank can be inserted into a J-Trim running vertically. Alternatively, a starter-strip can be installed into the J-Trim for the first plank to be securely fastened. (See step 5)

The base section is comprised of another J-Trim running horizontally. Install both base and cap before planks for easier drainage preparation. Always keep 3/16" at both ends of planks and the J-Trims to allow for expansion and contraction.



3. WATER DRAINAGE HOLES

To allow for proper water drainage, 1/4" wide holes must be pierced into the bottom J-Trim base and cap at 16" intervals.

Holes should be pierced with J-Trim base and cap tightly fitted together, but not completely snapped, before installing on the wall. After piercing holes, separate the two J-Trim pieces and install the base on the wall. After installing planks, the J-Trim cap will be snapped onto the base, aligning holes previously pierced.

VERTICAL INSTALLATION STEPS



4. SET SCREWS

When fastening planks, use two (2) set screws around the middle of a plank to avoid planks sliding down (a).

Set screws must be inserted directly in the aluminum. Other screws must be inserted into the oblong holes (b).



5. PANEL END - LAST PLANK

The last plank installed will likely need to be ripped before installation. Install a small 3/8" thick spacer between J-Trim base and plank to avoid movement on the last row.

Structural adhesive can be used between spacer and aluminum plank to secure installation and limit movement.



6. STARTER - ALTERNATIVE INSTALLATION

A starter-strip (a) can be inserted into a vertical J-Trim or Outside Corner (as shown). This installation will provide a securely fastened starter plank.



7. BASE - ALTERNATIVE INSTALLATION

The base of walls can be installed without an additional J-Trim. Great care must be taken to assure an aesthetic finish, with planks neatly cut and installed at the same height. A minimum 1" stand-off from the ground must be maintained at all times.

DAMAGED PLANK REPLACEMENT



1. CUTTING DAMAGED PLANK

Cut damaged plank with a circular saw equipped with metal cutting blade. Cut approximately 1" from the joint.

Use precaution as to avoid damaging superior plank when cutting.



2. REMOVING DAMAGED PLANK

Remove the lower part of the damaged plank by pulling outwards and upwards.



3. CUTTING SCREWS

The top part of the damaged plank is still fastened to the wall with screws. Using a cutting tool, cut the screws between the plank and the wall.

If the weather barrier is damaged by the cutting blade, make sure to properly repair it before moving on to the next steps.



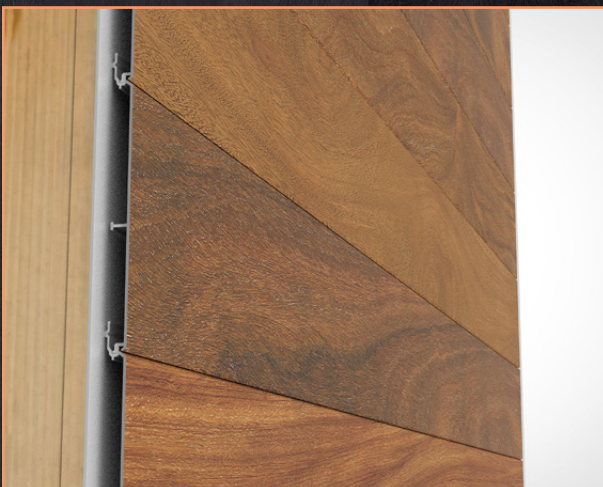
4. FASTENING NEW PLANK

The new replacement plank will be fastened to the wall with structural adhesive. Pull the top plank outward and apply adhesive at approximately 12-16 inches on center.



5. INSERTING NEW PLANK

Insert the replacement plank into the top plank first. Then, by pulling both planks outwards, insert the lower-part of the replacement plank into the bottom plank.



6. FINISHING INSTALLATION

Finish the replacement by pushing both planks up against the wall. The new plank will be embedded into structural adhesive for a permanent installation.