

Aluminum Accessories Starter Strip

TECHNICAL DATA SHEET



1. ALUMINUM

6063-T5 Aluminum extrusion 1.50 mm (0.06 in) thick recognized as the industry's first choice for its exceptional durability.

Two oblong holes 1 " X 0,125 ", spaced 2 " apart, all being repeated every 4 " to allow for fast and easy screw insertion.

Works with every profile and plank width.

Can be used for both vertically and horizontally installed siding.

2. PRIMER COAT

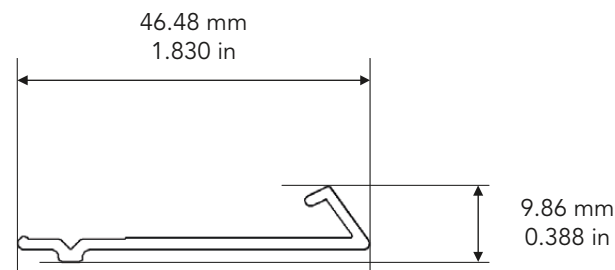
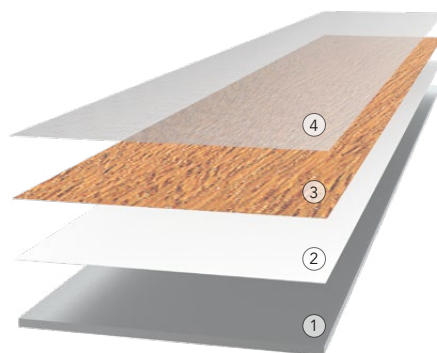
Primer coat ($\pm 1,2$ mil. thick) applied to ensure perfect adhesion between aluminum and ink.

3. HD PRINTING

High-definition digital inkjet printing (± 1 mil. thick) is used to create photographic reproductions of a wide range of textures and outstanding color variations.

4. UV BARRIER

A protective clear coat ($\pm 1,2$ mil. thick) is applied to provide long-term protection against UV rays and fading.



Scale : 1:1

Tests & Certifications*

- . CAN/ULC S102 - Fire Resistance
- . CAN/ULC S114 - Fire Resistance
- . ASTM E84 - Fire Resistance
- . NFPA 285 - Fire Resistance
- . ASTM D6578 - Graffiti Resistance
- . ASTM G155 - UV Resistance
- . ISO 7895 / ASTM E330 - Wind Load
- . ISO 7895 - Impact Resistance
- . ASTM D3359 - Adhesion testing
- . ASTM D4060 (CS-17) - Abrasion Resistance
- . Florida Building Code (FBC) compliance
- . LEED V4

* see website for full details

Name :	Job # :	Color :	Date :
	Model : FA-SSV-1201	Product : Aluminum siding accessories	Initials :
	Length : 3.65 m / 12 ft	Material : Aluminum 6063-T5	
	Drawing by: JCC Date: 18-11-22	Weight per piece : 1.16 kg / 2.56 lbs	